



AGENDA

ROGERS PARK BOARD

November 8, 2018 - 5:30 PM

The mission of the Parks and Recreation Advisory Board is to enhance the lives of current and future generations of Rogers' residents and contribute vision, leadership, and recommendations to the City Council for the best use and development of Rogers' parks, trails, recreation programming, and open spaces.

- 1. CALL TO ORDER AND PLEDGE OF ALLEGIANCE**
- 2. OPEN FORUM**
- 3. PRESENTATIONS**
 - 3.1 NCP Concessions Report
- 4. APPROVE AGENDA**
- 5. CONSENT AGENDA**
 - 5.1 October Minutes
- 6. GENERAL BUSINESS**
 - 6.1 2019 Work Plan Draft
 - 6.2 Rogers 2040 Comprehensive Plan Parks and Recreation Chapter Draft
 - 6.3 Rogers Event Center Charette
 - 6.4 2018 Work Plan
- 7. OTHER BUSINESS**
- 8. CORRESPONDENCE AND REPORTS**
 - 8.1 Correspondence
 - 8.2 Staff Update
- 9. ADJOURN**



**REQUEST FOR ACTION
PARK BOARD**

Meeting Date: November 8, 2018

Agenda Item: No. 3.1

Subject: NCP Concessions Report

Prepared By: Mike Bauer Recreation and Facilities Director

Overview / Background

Ron Mead of NAO will be on hand to present on the North Community Park Concession Stand operations for the 2018 season.



**REQUEST FOR ACTION
PARK BOARD**

Meeting Date: November 8, 2018

Agenda Item: No. 5.1

Subject: October Minutes

**Prepared
By:**

Recommended Park Board Action

Approval of October Park Board Minutes.

ATTACHMENTS:

Description

October Meeting Minutes

1. CALL TO ORDER

The regular meeting of the Park Board of the City of Rogers was called to order by Park Board Chair Dale Fuller on Thursday, October 11, 2018 at 5:35 pm at Rogers Public Works, 22350 South Diamond Lake Road, Rogers, MN, 55374.

Roll Call

Dale Fuller	- Park Board Chair	
Paul Hacker	- Park Board Member	
Peggy Warfield	- Park Board Member	
Jennifer Thomas	- Park Board Member	Absent
Judi Volkers	- Park Board Member	Absent
Gene Wipf	- Park Board Member	Absent
Brett Carlson	- Park Board Member	Absent
Shannon Klick	- Rogers City Council	
John Seifert	- Public Works Director	
Mike Bauer	- Recreation and Facilities Director	Absent
Marcy Dalchow	- Public Works Administrative Assistant	

2. OPEN FORUM None.

3. PRESENTATIONS

Ann Rexine and Penny Steele of the Three Rivers Park District (TRPD), shared an interactive presentation which surveyed attending park board members on what came to mind to them when they thought of the Crow-Hassan Park Reserve and what they would like to see offered or available at the park in the future. Also, the survey asked what a successful Master Plan would do for the Rogers Community and what the Three Rivers Park District should know about Rogers Residents and their hopes for the Crow-Hassan Park Reserve going forward. Answers from the Board Members were captured in the interactive survey.

A video was shown featuring a map of the 26,000 acre Crow-Hasson Park Reserve location, what activities are offered there, some of the park's inhabitants/wildlife as well as the history of the park reserve. Board members also learned the name Hasson refers to the sugar maple trees in the park.

Further discussion included:

Currently the Crow-Hassan Park Reserve is primarily used by horse owners and often horses and snakes come to mind when thinking of the park. However the Crow-Hassan Park Reserve has much more to offer, a dog park, hiking, walking and running trails. We (TRPD and the City of Rogers) need to improve communications and tell people about this park.

Three Rivers Park District would like to utilize the park to better connect the Crow River Regional Trail which extends from Watertown to Ostego, going through cities of Delano, Rockford, Hanover, Rogers and Dayton.

It was mentioned by Park Board Chair Dale Fuller access to the park reserve is an issue, parking is far from the river for kayaking or canoes, trails are long and most areas are not accessible to strollers or wheelchairs.

There is a strong desire of the City of Rogers and Residents for programming for families as it relates to activities in the Crow-Hassan Park Reserve.

The last Crow-Hassan Park Reserve Master Plan was completed in the 1970's.

Public Works Director John Seifert stated the plans and goals of the Three Rivers Park District are consistent with the City of Rogers plans for the Crow-Hassan Park Reserve.

Going Forward:

Ann Rexine would like others to be encouraged to take this survey as they are collecting and looking at each of the comments received. Three Rivers Park District would like the Crow-Hassan Park Reserve to be relevant to the area and connect residents to the park reserve and nature.

Ann Rexine suggested the Park Board visit the Three Rivers Nursery for a tour and they attend each other's meetings. Sharing information with their organizations and the City Council.

Ann Rexine and Penny Steele will attend another Park Board Meeting. Meeting date TBD.

4. APPROVE AGENDA

Approval of October 2018 Meeting Agenda Motion by Peggy Warfield, seconded by Paul Hacker. Motion carried 3-0.

5. CONSENT AGENDA

Approval of Consent Agenda and Minutes Motion by Paul Hacker, seconded by Peggy Warfield. Motion carried 3-0.

6. GENERAL BUSINESS

6.1 Park Capital Investment Program (CIP) List

Public Works Director, John Seifert reviewed in detail the City of Rogers Trails & Sidewalk and Parks Financial Management Plans. The construction of many trails are in progress and it is expected we will have funding to continue most of them. Highlights are below:

- The City of Rogers has received a grant of \$100,000 for a Safe Route To School for the Co Rd. 144 Trail, Marie Ave. to Hassan Elementary which will help with the entire trail project.
- The City of Rogers is working with Three Rivers Park District on some of these trails.
- Hassan Gravel donated a portion of the sand required for the project. This saved the city approximately \$3,000. The City of Rogers is working to get other donations for park projects so funds can be re-aligned amongst the various projects.
- Only the final lift is left to be completed on the RAC parking lot overlay.
- The Baseball Association would like shade on dugouts.
- The City of Rogers is working with ISD 728 to construct eight tennis courts.
- There are other big projects in the plans. The City of Rogers goal is to utilize grants, donations and partner with Three Rivers Park District and others to complete these projects.

Concerns and Reactions from Park Board:

- Park Board Member Paul Hacker questioned if the city sales tax is not approved and the school referendum is not passed and some of the expected funds are not received, the City may be unable to produce the additional revenue expected from the sales tax – then what?
 - Public Works Director, John Seifert responded it may be possible to use city staff to help with some of the projects to save money. His concern was staff's other work needed to continue and the extra time to work on these projects would need to be evaluated.
- Council Member Shannon Klick inquired, the Broadway Trail Link includes a large sum for retaining walls and consumed a large part of the trails budget.
 - Public Works Director, John Seifert responded city staff may be able to construct the wall in an effort to reduce costs the excel spreadsheet for the Trails & Sidewalks Financial Management Plan will need to be updated.
- Park Board Member Paul Hacker asked if the City of Rogers would be reimbursed by the Three Rivers Park District if we constructed some of the trails on County Road 144.
 - Public Works Director, John Seifert responded, yes we would be reimbursed within the terms of the Three Rivers Park District and City of Rogers agreement.
- Council Member, Shannon Klick has received the question many times, when will the boards will be put back around the outdoor ice rink in Triangle Park.
 - Public Works Director, John Seifert stated outdoor ice has a limited life span and it makes sense to reallocate funds used to reinstall and maintain the boards.

Consensus of Board was to approve the Capital Investment Program with edits. Motion carried 3-0. No second of motion.

6.2 2018 Work Plan

While working on the site preparation on Triangle Park a soil contamination was discovered. Soil corrections have been made.

No Motions were made.

6.3 2019 Work Plan Draft

This plan has heavy emphasis on work to be completed on trail projects. In the spring of 2019 work is planned for tennis courts. Park Board Chair Dale Fuller expressed concern that if the school referendum was not passed, plans for the pool may be jeopardized. City of Rogers staff will be used as much as possible for projects to save costs related to all projects.

No Motions were made.

7. OTHER BUSINESS None.

Park Board Member Paul Hacker asked how much was in the Parks Fund. \$1,044,050.62. He stated we need to find a way to get the Triangle Park Pavilion completed. Discussion followed that the City of Rogers has decisions to make as a community. It is a positive note the City of Rogers is continually growing however this requires we invest in other areas as well. Needs and priorities must constantly be reviewed and addressed.

8. CORRESPONDENCE AND REPORTS

8.1 Staff Update None.

8.2 Public Correspondence None.

9. ADJOURN

Motion to Adjourn 7:18 pm by Paul Hacker, seconded by Peggy Warfield. Motion carried 3-0.



**REQUEST FOR ACTION
PARK BOARD**

Meeting Date: November 8, 2018

Agenda Item: No. 6.1

Subject: 2019 Work Plan Draft

Prepared By: Mike Bauer Recreation and Facilities Director

Recommended Park Board Action

Review and recommend changes to the 2019 Work Plan Draft.

ATTACHMENTS:

Description

2019 Work Plan Draft

2019 Twelve Month Work Plan

☐

Trails, Parks, and Recreation Referendum (pending referendum results)

☐

Trails

- Development
 - o Rogers Elementary/Main Street (SRTS)
 - o Rush Creek (TRPD)
 - o Crow River (TRPD)
- Design
 - o Hassan Elementary To Marie Ave (SRTS)
- Construction
 - o Broadway Trail Link (FMP)
 - o Brockton Lane to Wellstead Drive (FMP)
 - o Territorial View Estates
 - o Shadow Wood Looping Trail

☐

Lions/Triangle Park Pavilion Task Force

- Site Prep
- Pavilion Construction

☐

Hennepin County Youth Sports Grant

- Reservoir Fields
- SCP???

☐

Tennis Center (Public Private Partnership)

- Parking Lot and Site Grading

☐

South Community Park Planning

- Rink Placement/Construction

☐

ISD 728 Partnership

- Pool
- Performance Gym
- Community Access

☐



REQUEST FOR ACTION PARK BOARD

Meeting Date: November 8, 2018

Agenda Item: No. 6.2

Subject: Rogers 2040 Comprehensive Plan Parks and Recreation Chapter Draft

Prepared By: Mike Bauer Recreation and Facilities Director

Recommended Park Board Action

Move to approve the Parks and Recreation chapter of the Rogers 2040 Comprehensive Plan.

Overview / Background

The City of Rogers is updating the comprehensive plan that will be known as the 2040 Comprehensive Land Use Plan.

The plan is a guide for city decision makers, providing a vision for land use, housing, transportation, parks and trails, economic development, and other city systems.

Your input is a key component of this vision, by ensuring that your community's values and planning needs are reflected in the plan. The Parks and Recreation Chapter has been derived primarily from the 2017 Parks, Open Space, and Trails System Plan. Attached is the current draft.

ATTACHMENTS:

Description

Parks and Recreation 2040 Comp Plan Chapter



Parks, Open Space and Trails

Introduction

The mission of the Parks and Recreation Advisory Commission is to enhance the lives of current and future generations of Rogers' residents and contribute vision, leadership, and recommendations to the City Council for the best use and development of Rogers' parks, trails, recreation programming, and open spaces. The vision for the Parks, Open Space, and Trails Plan is an outgrowth of the common vision and reflects the City's commitment to its desired lifestyle and to provide a balanced overall park and trail system.

"Promote a high quality of life in Rogers by providing a balanced and sustainable system of parks, natural open spaces, athletic facilities, and trails consistent with the sense of place in the community."

Quality design and amenities are vital to maintaining high levels of use of local parks and trails. With the many recreational choices available to people, participation studies clearly indicate that residents will not use parks or trails if they do not have a quality experience. Attention to details, amenities, design, materials, and surroundings are incredibly important for user experience and cannot be overlooked when improving existing parks and developing additions to a park's system. The quality of residents' experience has become increasingly more important when determining which parks to use and how frequently parks are used in the community. In order to take Rogers' parks and trails to the next level, the City must budget and prioritize these elements of quality within the parks system. A National Recreation and Parks Association (NRPA) survey found that 85% of Americans consider high-quality park and recreation amenities an appealing feature when they are choosing a new place to call home.

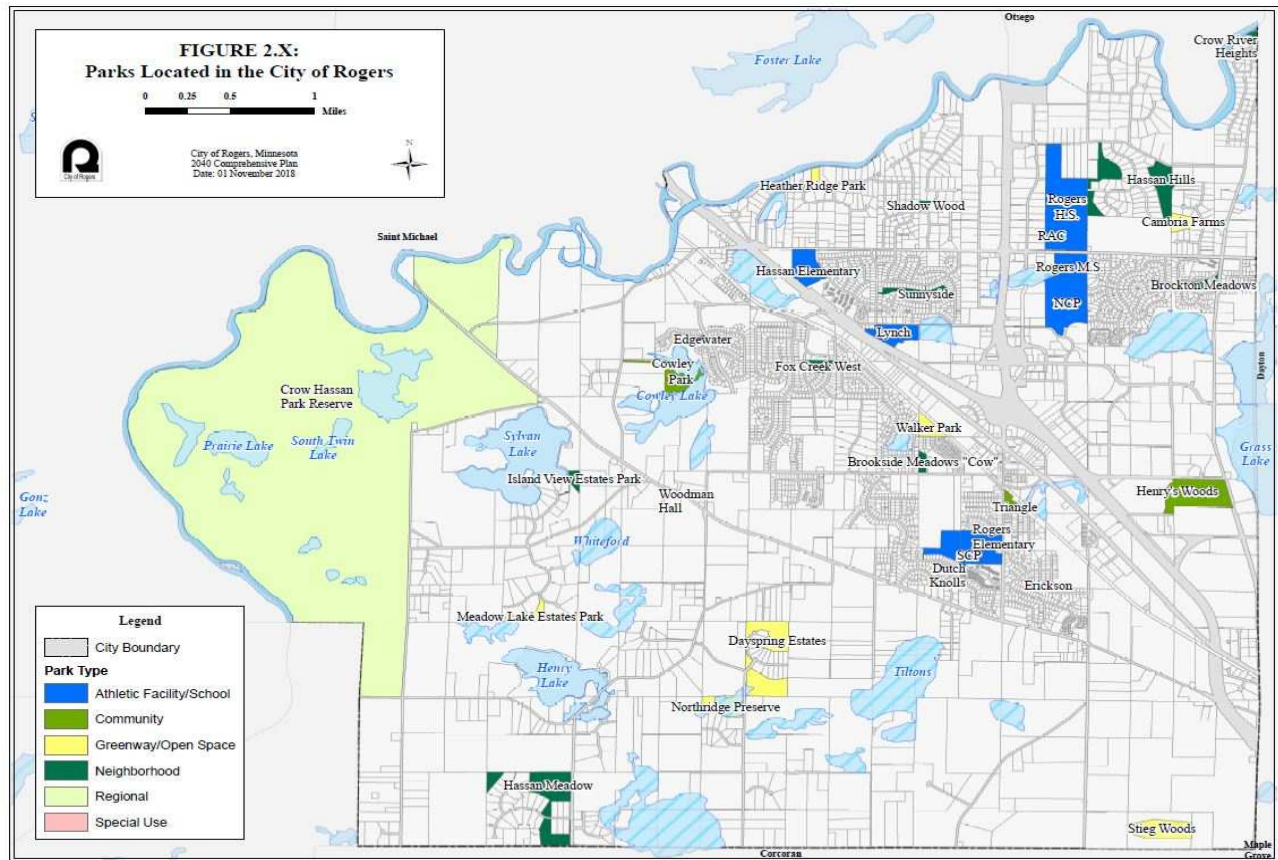


Parks, open space, and trails are essential elements in preserving community character and enhancing quality of life. The vision for Rogers' parks, open space, and trail systems over the next 20 years is to create a balanced system of parks, athletic facilities, recreation programs, connected natural areas, and trails within the context of responsible land stewardship, long-term sustainability, and economic vitality. The Parks and Recreation Advisory Commission recognizes investing in parks, trails, and community facilities will improve the prosperity of the community, making the area attractive to families and businesses and will provide active living, trails, and open space.

The Parks, Open Space, and Trails Chapter is based on the City's 2017 Parks, Open Space, and Trail System Plan. The 2017 Parks, Trails, and Open Space Plan is an update to the 2007 plan, which includes the 2011 and other related amendments. Over the past 10 years, the City has made significant improvements and experienced changes within their system, with the most notable being the inclusion of Hassan Township into Rogers, all of which are captured within this Plan.

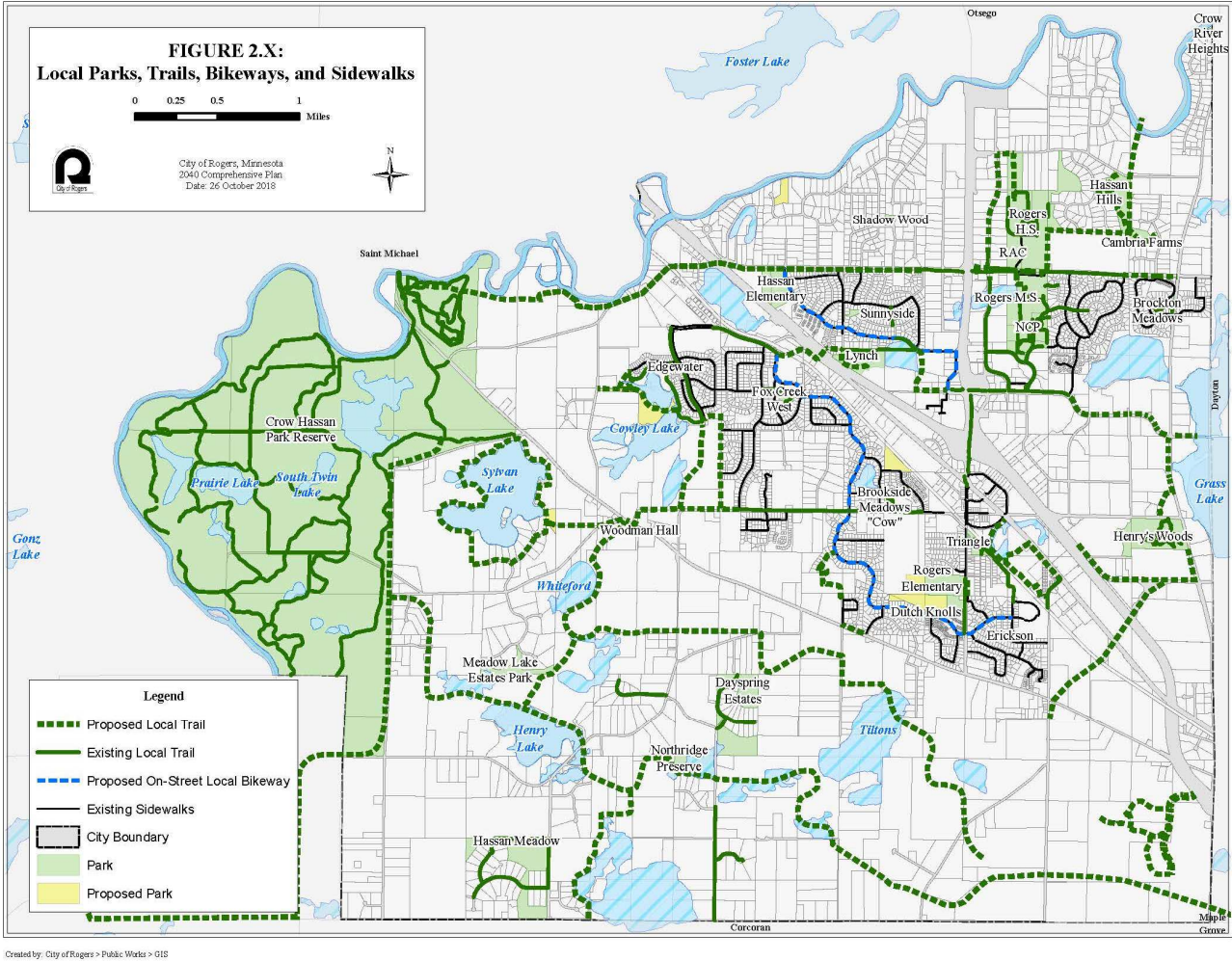


Within the City limits of Rogers, the park and open space offerings include 32 City parks occupying 601 acres and a trail system of 66 miles. In addition, the Three Rivers Park District provides a regional park in Crow Hassan Park Reserve that includes an additional 2,182 acres. The total park and open space provided within the City limits of Rogers is 2,783 acres.



Created by: City of Rogers > Public Works > GIS

TOTAL PARK LAND & OPEN SPACE (Includes local and regional facilities within Rogers)	2,783 ACRES
Local (City) Park Land	601 Acres
Active Parks	452 Acres
Neighborhood Parks	127 Acres
Community Parks	69 Acres
Community Playfields	256 Acres
Passive and Special Use Parks	36 Acres
Open Space	35 Acres
Special Use Parks	1 Acre
Forest Preservation Areas (City)	113 Acres
Three Rivers Park District Parks & Trails (Regional)	2,182 Acres



TOTAL TRAILS, BIKEWAYS & SIDEWALKS	80 Miles
City Trails	42 Miles
City Sidewalks	27 Miles
County Bikeways On Street	9 Miles
County Bikeways Off Street	2 Miles



Parks

The City of Rogers has several different classifications of parks within the Community ranging from neighborhood and community parks to athletic facilities and a Regional Park. The following table includes the breakdown of all City parks by classification and definition. As development continues in Rogers, the City is constantly adjusting and researching park facility needs. Currently, there are 35 acres per 1,000 residents in Rogers.

<i>Classification and Parks</i>		<i>Acreage</i>	<i>Guidelines</i>	<i>Application to Rogers</i>
Neighborhood Park	Brockton Meadows Park	3.6	Neighborhood parks are the basic units of the park system and serve a recreational and social purpose. Focus is on informal, active, and passive recreation. Neighborhood parks are typically five acres or more, eight to ten preferred. Mini-neighborhood parks, only used when securing more land is impractical, are one to three acres of developable land. Service areas which are uninterrupted by major roads and other physical barriers are a quarter mile radius for mini parks and up to a half mile for a typical neighborhood park. Mini parks tend to be less effective at meeting neighborhood needs.	Neighborhood parks remain a basic unit of the park system in Rogers. In areas with urban densities, a service area of 1/4-1/2-mile radius remains appropriate. 1/4-mile radius is most appropriate for mini-parks. When new parks connect with greenway-based trails, service areas can be expanded to 1/2-mile radius or slightly more since the trails and open space become part of the park experience.
	Brookside Meadows Park	3.9		
	Crow River Heights Park	1.1		
	Dutch Knolls Park	0.4		
	Edgewater Park	3.3		
	Erickson Park	1.0		
	Fox Creek West Park	5.6		
	Hassan Hills Park	42.8		
	Hassan Meadow Park	47.6		
	Island View Estates Park	5.0		
	Shadow Woods Park	2.4		
	Sunnyside Park	10.2		
Total		126.9		
Community Park	Cowley Lake Park	17.4	Community parks serve a broader purpose than neighborhood parks. Focus is on meeting community based recreational needs, as well as preserving unique landscapes and open spaces. Size varies, depending on function. Five acres minimum preferred, with 40 or more acres optimal. Service areas can be community-wide or several neighborhoods in a given area of the City with pedestrian connections via trails or sidewalks.	Given the City's proximity to Crow-Hassan Park Reserve and the natural areas that will be set aside for future trail development, there is less overall need for traditional community parks beyond that defined under the approved Plan.
	Henry Woods Park	45.9		
	Triangle Park	5.3		
	Total	68.6		



Athletic Facility/School	Lynch Park	20.4	Athletic fields consolidate programmed adult and youth athletic fields and associated facilities to a limited number of sites. Tournament level facilities are appropriate. Size varies with 20 acres or more desirable, but not absolute. 60 to 80 acres is optimal.	This classification has application to Rogers to meet local needs for athletic facilities (in concert with park-school sites). As a growing community with many families, facility demand will continue to grow in sync with population growth.
	North Community Park	50.7		
	South Community Park	26.8		
	Hassan Elementary School	22.3		
	Rogers Elementary School	24.5		
	Rogers Middle School	22.7		
	Rogers High School	89.0		
	Total	256.4	School sites are used in concert with, or in lieu of, City parks to meet community recreation needs. School sites often provide the majority of indoor recreation facilities within a community. Sizes vary, depending on specific-site opportunities.	Continuing the established relationship between the School District and City is vital to successfully meeting the long-term demand for athletic facilities in a cost-effective manner.
Special Use	Rogers Activity Center	0.9	Covers a broad range of parks and recreation facilities oriented toward single-purpose uses – such as a nature center, historic sites, plazas, urban squares, aquatic centers, campgrounds, golf courses, etc. Overall size varies, depending on need.	The use of this classification will be limited in Rogers at this time.
Greenway/Open Space	Cambria Farms Park	9.1	Greenways and open spaces are areas that are set aside for preserving and protecting natural resources, landscapes, critical habitats, high-value forested areas, conservation areas, providing buffer areas, and corridors for wildlife. Greenways also have a secondary use of trails, without infringing upon the natural system.	Within the City proper, the potential for establishing greenways and preserving open space is more limited. This reinforces the importance of working closely with Three Rivers Park District, local developers, and other partners on interconnected trail systems to their planned greenway system. Trailhead facilities will also be found under this category.
	Dayspring Estates Park	45.3		
	Heather Ridge Park	5.9		
	Meadow Lake Estates Park	13.2		
	Northridge Preserve	20.0		
	Walker Park	9.3		
	Woodman Hall Park	0.1		
	Stieg Woods	22.8		
	Total	125.7		



Amenities Offered

	Play Area / Equipment	14
	Sledding Hill	2
	Basketball / Hard Court	7
	Sand Volleyball	1
	Amphitheater	1
	Shade / Picnic Shelter	5
	Concessions + Restroom Building	3
	Outdoor Hockey	2
	Community Gardens	2
	Prairie Restoration/Pollinator Habitat	1040 Acres
	Multi-Use Paved Trail	50 Miles
	Sidewalks	24 Miles
	Tennis / Pickelball	1
	Ball Diamond	18
	Rectangular Fields (Soccer, Football, Lacrosse)	15
	Canoe / Kayak Launch	1
	Pleasure Rink	1
	Frisbee Golf	1

Thrive 2040 Outcomes

Equity



The current and planned parks and trail system are evenly distributed throughout the community. There are on-going maintenance inspections of parks, trails, facilities and playground to ensure that parks are compliant with ADA rules and standards.

Park-School sites are those that offer joint-use opportunities between the City and School District for shared use of facilities. There are currently four school sites that fall under this classification within Rogers, each of which are in the Independent School District 728. Over the past years, the City and School District have jointly participated in the acquisition, development, and maintenance of these sites in various ways. In some cases, the relationship has been quite extensive and involved significant contributions from the City.

Livability



The distribution of future neighborhood parks is intrinsically linked to development patterns and layouts, as well as how a given park interlinks with greenways and greenway-based trail system. This is especially the case in future development areas, where the greatest opportunity lies for blending neighborhood parks with greenways.

In situations where neighborhood parks are integrated with greenways and green-way-based trails, the spacing between individual parks can be somewhat greater (1/2-mile or more) than traditional standards suggest for two reasons:

- 1) The greenway is part of the park experience.
- 2) The trails within the greenway make it easier and safer to get to the park from a given neighborhood.

As shown on the System Plan, this is most applicable to the areas in the west and south quadrants of the City.

Prosperity



Recognizing that many people have a choice of where they live parks, natural areas, and interconnecting trail corridors are used as a major factor in shaping development.

The plan will encourage sequential growth within the City in harmony with the natural environment, and enhance the quality of life within the City by providing adequate parkland and natural areas to fulfill the present and future needs of residents.



Stewardship



Preserve open spaces, and wetlands in all parts of the community to promote the rural nature of Rogers

Protect and enhance the environmental and natural resources throughout the community.

OBJECTIVES

- To preserve significant natural resources as open space and a highly valued aspect of the overall open space system
- To maintain and enhance the character or appeal of the community through interconnected natural open spaces
- To encourage orderly and sequential growth within the community and in harmony with the natural environment.
- To ensure sustainable and desirable natural resource areas and ecological systems are protected and managed within the City.

Sustainability



The Parks and Recreational facility have been used to highlight sustainability projects that have had positive environmental and financial impact on the community.

Solar power is used at the ice area, support garage, and in one of the community parks.

The lighting systems on several of the play field reduces utility costs by 50% and eliminates 90% of unwanted spill and light glare as compared to conventional lighting.

The City is utilizing a rain harvesting system to irrigate North Community Park. Harvesting of captured storm water from drain tiles, parking lot runoff, and roof drains also capturing and reducing fertilizer run off from athletic fields.

Community Engagement

The city has performed a variety of comprehensive citywide engagement activities, including several surveys conducted during 2014-2017. These activities helped determine the changes and needs of the community. The 2017 Plan consolidates past updates, incorporates the many improvements made to the parks and trails system over the past 10 years, and outlines proposed future improvements for the next 10 years.

- Annual Youth Association Meetings
- City Website
- Collaboration with ISD 728 on Athletic Fields and Recreation Programming
- Periodic Formal Interviews with Athletic Associations
- Community Cafes
- Open House Events
- Farmers Market Information Booth
- Online Polls
- News Release
- Professional Random Scientific Survey of Rogers Residents
- Recreation Program Participant Surveys



- Staffed Public Information Booth at Annual Rockin Rogers Celebration
- Direct Contact with Citizens at Public Council Meetings

Community engagement efforts have provided trends in the community's desire to provide quality facilities for quality park and recreation experiences. The following is a list of outcomes from this effort:

- Residents desire safe trails connecting places where they live and work to places where they want to be.

Central trail themes include:

- Looping Trails
- Gap Connections
- Trail Heads
- Destinations along Trail Corridors
- Safer Pedestrian Crossing for
 - Interstate I-94
 - School Crossing from Rogers High and Middle Schools



- Quality Aquatic Offerings
 - Splash Pad
 - Indoor Swimming Pool
 - Future Outdoor Pool



- Park planning that links activities through “Social Gathering Spaces”. This should be an inclusive setting for a variety of different interest groups, age groups, and uses.
- Dedicated place for Seniors and Senior Program Offerings
- Quality Venue for Outdoor Music and Community Festivals.
- Future planning efforts for a Community Center for people of all ages to enjoy. Elements to be considered:
 - Exercise and Fitness
 - Indoor Turf Facility
 - Athletic Fields
 - Ball Diamonds
 - Multipurpose

South Community Park II Master Plan
Rogers, Minnesota





Active Living

The City of Rogers and the Rogers Parks and Recreation Commission are committed to building parks and trails systems that promote active living. A community which promotes active living makes it easy for residents to integrate physical activity into the daily lives. People are more likely to use facilities for utilitarian purposes (such as walking or biking to a store, school, workplace, or restaurant) when these facilities are part of a larger network and connected to desired destinations.

Benefits of Parks and Recreation

Quality parks, along with schools and access to transportation, are typically the top three criteria people consider when choosing a place to live.

Cultural 🏛️

Parks preserve natural and cultural heritage, and significant natural features.

Health ❤️

A healthy recreation and park system equals healthy residents. When people have access to parks, trails, and recreation, they exercise more. Increased exposure to natural areas has been linked to improved physical and mental health.

Social 👥

Parks also have important social benefits. Parks are often the focal points of neighborhoods. As places for neighborhood activities, celebrations, and informal interaction they provide places for community members to come together.

Natural Resources 🌳

Parks and open space provide environmental benefits. Trees and vegetation found in parks, preserves, and open spaces improve air and water quality. These areas also play a role in managing storm water runoff and protecting natural areas.

Property Values 🏠

Parks and open space increase property values. Numerous studies show that proximity to parks, trails, and open spaces increases residential property values. Parks and open space can also positively affect commercial property and can be catalysts for increased property values.

Beauty 🏞️

Parks contribute to aesthetics. Parkways, tree-lined streets, gardens, lush landscaped areas, views of rivers and lakes, stately woods, and public art are all things that make a city a beautiful place to live, work, play, and shop. They make essential contributions to a city's livability and vitality.

Interlinked

The City of Rogers recreation system is intrinsically interconnected with School District properties and the former Hassan Township's Parks and Trail System Plan, for the mutual benefit of residents living in the City and Township. Since the 2007 Park Plan was developed, Hassan Township has merged with the City of Rogers and all facilities and maintenance operations are now overseen by the City. The City and School District have an established, mutually-beneficial relationship in serving local residents' recreational needs, especially as it relates to athletic facilities. This includes cooperation on land acquisition, development, operations, and maintenance of athletic facilities at a multitude of sites. Continuing this relationship remains important in order to maximize the efficient use of land and funding resources to meet local needs. Key to the continued success of this partnership is formalizing the commitments and responsibilities of each entity through partnership agreements which will become increasingly essential as both the City and School District reach their respective population and enrollment thresholds, at which time the efficient use of facilities is most important to leveraging funding and avoiding duplication of efforts.



Neighborhood Parks



Neighborhood-level parks serve the recreational needs of individual neighborhoods. Additionally, these parks can serve as a social pulse point and provide an area for socialization close to home.

Recreation is the main intent of these parks, but they should also have amenities that can appeal to a wide variety of individuals. Neighborhood parks should not be extensively programmed since that takes away from their capacity to serve local residents' day-to-day recreational needs. Although neighborhood parks can be used on occasion for younger children's programs such as T-ball, doing so should be carefully limited to avoid overuse issues, such as excessive parking in the neighborhoods, turf quality issues, and detracting from the sense of place in the park. The design of neighborhood-level parks should respond to the local needs of the neighborhood instead of general community needs. Neighborhood parks within a community should work in coordination with one another to ensure that all neighborhood recreational needs are met.

The system plan emphasizes providing both developed recreational facilities and natural areas within individual neighborhood parks to meet recreational demand while maintaining an appealing natural setting. The balance between turf and natural vegetation should be strategically determined on a site-by-site basis as part of the design process.

Neighborhood parks are selected through a screen of criteria to ensure the quality and success of the park.

- 5 acres or more, 8 to 10 acres preferred, with 3 acres the minimum size
- Centrally located within the neighborhood area it serves



- Site exhibits desirable physical and aesthetic characteristics, with a balance between developable open space and natural areas; lowlands and other lands not suitable for development are also not suitable for a neighborhood park
- Connection to neighborhoods via trails or sidewalks; the less convenient pedestrian access, the less use a park is likely to receive
- Connection to a greenway or open space system to expand the sense of open space at the neighborhood level

Neighborhood parks are often associated and driven by development, which further stipulations about the amount, location, and character of land set aside for a neighborhood park are defined in the developer's agreement with the City. The City has defined three different service levels with corresponding amenities for developers to meet.

Community Parks

Community parks typically serve a broader purpose than neighborhood parks. Their focus is on meeting community-based recreational needs, as well as preserving unique landscapes and open spaces. The general palette of amenities typically found within this class of park includes:



South Community Park and Cowley Lake Park are the only Community Parks left to be developed within the System. South Community Park, Henry Woods Park, Lions Park, and the development of Cowley Lake Park should be adequate to meet future demands for this type of park when coupled with the open space offerings of the regional park reserve.



- Amenities common to a neighborhood park, albeit at a larger scale
- Larger group picnic facilities
- 3-season and 4-season buildings
- Outdoor performance venues
- Learning and education opportunities
- Outdoor water play features
- More extensive looped trail systems
- Open maintained green space for passive and active use
- Winter activities, such as ice skating, sledding, and skiing
- Special use facilities

Regional Parks

Operated and maintained by Three Rivers Park District, Crow-Hassan Park Reserve is the only Regional Park within the City of Rogers. At approximately 2,600 acres located along the Crow River on the west side of the city the space is defined by the large uninterrupted expanse of land. It is an outstanding area for providing a feeling of wilderness and solitude and the 600 acre restored prairie is a colorful highlight of the reserve. Deer, fox, coyotes, trumpeter swans, hawks, and bald eagles may be seen from the many miles of natural-surfaced trails that wind through the park. The City of Rogers is interested in the idea of a "Sister Park" in collaboration with Three Rivers Park District. Currently Three Rivers Park District is working on a master plan for the Park Reserve, with the Parks and Recreation Advisory Commission providing comments and encouraging citizen engagement.



Athletic Facilities

Current and future athletic facilities parks rely heavily on past partnerships between the City and School District to fulfill recreational needs within the community. Currently some of the athletic fields are utilized both by recreational groups and School District. Due to a large amount of economic development in the region, the School District may be expanding in the near future and relocating fields closer to the school campuses. This may give the City the opportunity to develop new athletic fields or re-purpose the current sites for other recreational uses.

Natural Open Space (Greenway System)

The open spaces (greenways) envisioned under this planning continuum primarily relate to undeveloped areas within the City. Setting aside some portion of these lands as development occurs for open space preservation and trail corridors was a major goal of the 2007 System Plan and continues to be a major goal today. Within the current city limits, the opportunity to set aside land for open space is relatively limited.

The natural open space system consists of publicly-owned lands (held by the City or other public agencies) and privately-owned lands that would be perpetually preserved as natural open space, most often through the use of conservation easements negotiated with developers and landowners as land is developed.

There are only a few publicly-owned parcels scattered throughout the City and Township. Although park dedication will continue to be used in select instances to acquire open space, it alone will not be sufficient to achieve the full vision for the natural open space system.

The most desirable land for inclusion in the open space system is based on evaluation of the natural resource qualities of undeveloped properties, which are primarily found in the southern and western portions of the City. Since the vast majority of these lands are privately-owned, setting aside any portion of them for open space will require a high level of collaboration and flexibility between the City and landowners/developers to achieve win-win outcomes that serve everyone's best interests. It is very unlikely that this type of open space system can be realized through public funding alone.

Trail System

Trails, sidewalks, and on-street bikeways enhance the quality of life for Rogers residents by providing recreational, fitness, and transportation opportunities for multiple users, including walkers, cyclists, and in-line skaters. The Rogers Trail System Plan provides information on trail classifications. The local trail system plan, Regional, and County trail plans all provide a cohesive plan for the community. The collective effort provides design guidance for trails and bikeways.

Local Trails and Bikeways

Local bikeways include both on-street bikeways and off-street trails. Local trails are designed to be multiuse, and may be located within a greenway, park, or open space, or within road rights-of-way or utility easements. Some local trails may run parallel to a roadway (also known as a sidepath).



Local on-street bikeways and off-street trails will form the backbone of the trail system, connecting to neighborhoods, adjoining communities, regional parks, and other facility types in the trail system.

Local trails and on-street bikeways form the backbone of the local system. The City of Rogers has 15.4 miles of off-street trails and currently does not have any existing on-street bikeways. The plan identifies 22.1 miles of planned off-street trails and 5.7 miles of planned on-street local bikeways.

Sidewalks

Sidewalks provide safe travel for walking and jogging routes within residential areas and business districts. Sidewalks also connect residents to parks and other destinations around the community. Although biking and in-line skating are allowed on sidewalks, the narrower width limit their use for this purpose. Sidewalks are most often located within road rights-of-way of a local street.

Sidewalks are primarily used as a means to connect neighborhoods to local destinations and developed areas, as well as to other facilities in the trail system. Sidewalks are an essential part of the trail system, particularly for those who rely on walking as a means of transportation, recreation, or exercise, such as youth, seniors, or non-car owners.

The City of Rogers currently has 26.6 miles of sidewalks in the City. This plan does not identify any planned sidewalks on the trail system plan map, but it is anticipated that the sidewalk network will grow as the City fills in gaps in the sidewalk network and as new development occurs.

Unpaved Trails

Unpaved trails have a natural surface and are commonly developed in areas where hiking and jogging are expected to be the primary activities. These trails are not intended for bicyclists or in-line skaters.

Unpaved trails are primarily developed in natural parks as secondary connections to other trails, within a preserved natural area such as the Crow Hassan Park Reserve.

Trail Connectivity

The City of Rogers understands the importance of trail connectivity for users as “trail connections” is consistently a high priority in community surveys. One of the challenges the community faces is crossing Interstate 94. Currently there are 4 opportunities to cross the Interstate, one of which is pedestrian friendly (TH 101). The 2017 Parks, Trails, and Open Space Plan outlines in detail the locations of all existing crossings and potential future crossings for pedestrians.

County Trails and Bikeways

Hennepin County bikeways include off-street trails and on-street bike facilities. The County currently has over 2.5 miles of on-street bike facilities in Rogers, and has more planned facilities identified in the Hennepin County 2040 Bicycle Transportation Plan.

Future Hennepin County bikeways are anticipated to be primarily off-street trails, which may run parallel to existing roadways.



The Hennepin County 2040 Bicycle Transportation Plan identifies several planned bikeways in Rogers, and this Plan identifies 11 miles of off-street County bikeways. One of the planned bikeway alignments in the County Bicycle Plan was along the railroad tracks west of I-94, but this Plan proposes to move that County bikeway to Territorial Road because it provides a more direct route across the community and connects to more planned bikeways and trails. This Plan proposes that both the RBTN and planned County bikeway follow the same alignment on Territorial Road and County Road 81. Developing County bikeways requires coordination between the City of Rogers and the County, including planning, design, and funding.

Regional Trails

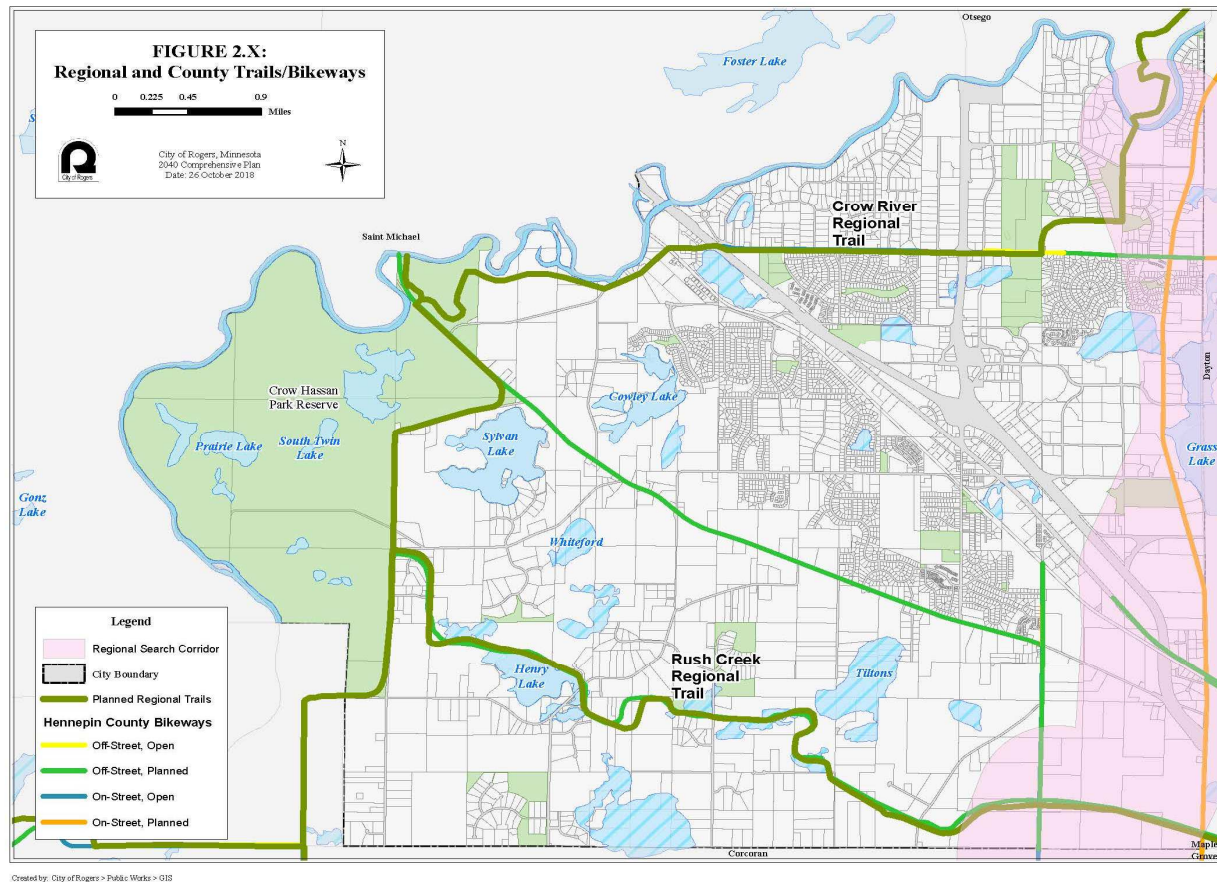
Regional trails are typically longer trails that connect multiple communities in a region. The planning and designation of regional trails is led by Three Rivers Park District in collaboration with the City of Rogers and the Metropolitan Council. In order to be designated as Regional trails, they must first be identified through a master planning process.

Two regional trail master plans are approved in Rogers (Crow River Regional Trail and Rush Creek Regional Trail), and one Metropolitan Council search corridor is located in Rogers.

There are two planned Three Rivers Park District (TRPD) regional trails located in Rogers, and one TRPD regional trail search corridor. TRPD's regional trails provide off-street trail connections between multiple communities in the region, and are popular with bicycle commuters and recreational users alike.

TRPD's Rush Creek Regional Trail currently links the Elm Creek Park Reserve to Coon Rapids Dam Regional Park. The Rush Creek Regional Trail Master Plan was approved in 2008 and calls for extending the trail west from Elm Creek Park Reserve through the southeast corner of Rogers and up to Crow Hassan Park Reserve in northwest Rogers. The precise location of the regional trail will be determined as land and easements are acquired from willing property owners.

The second planned TRPD regional trail in Rogers is the Crow River Regional Trail, which was approved in 2017 and has a proposed route that stretches from the Luce Line State Trail in Watertown Township, through Rogers, and over to the West Mississippi River Regional Trail in Dayton. The planned alignment begins in the southwest corner of Rogers, goes north along the eastern edge of the Crow Hassan Park Reserve, and then turns east along 141st Ave towards the northeast corner of Rogers. The trail was originally planned to follow the Crow River, but the alignment has been shifted to 141st Ave because acquiring individual land parcels adjacent to the Crow River is likely to be too difficult. This new alignment provides greater access to neighborhoods, retail areas, and direct connections to Hassan Elementary School, Rogers Middle School, and Rogers High School.



Regional Parks and Trails (Three Rivers Park District)

Three Rivers Park District is responsible for the planning, development, and operation of “regional” park and recreation facilities in Rogers and throughout the Park District. This regional outreach serves a large portion of the greater Minneapolis-St. Paul metropolitan region. The City of Rogers Park Board has focused its planning and development effort in an effort to avoid duplication of amenities and services. Three regional facilities exist within the City of Rogers:

- Crow Hassan Park Reserve
- Crow River Regional Trail (proposed)
- Rush Creek Regional Trail (future extension)

Crow-Hassan Park Reserve

The Rogers Parks and Recreation commission is providing feedback on the master plan being developed by Three Rivers Park District for Crow-Hassan Park Reserve. Located on the Crow River, this park offers an expanse of peaceful wilderness. The restored prairie is a year-round attraction. Miles of trails wind through the park reserve and allow an opportunity to see a variety of wildlife such as deer, fox, coyotes, trumpeter swans, hawks,



and bald eagles. Scenic trails and group campsites accommodating horses make this park a popular destination for horseback riders. The master plan process will further define the importance of the park's natural resource protection balanced against recreational access.

Key goals of the master plan include:

Goal 1: Preserve the unique natural resources.

Goal 2: Celebrate the Crow River.

Goal 3: Introduce people to nature and outdoor recreation.

Crow River Regional Trail

The proposed Crow River Regional Trail (CRRT) will expand recreational access to the Crow River - providing multiple opportunities along its 32-mile corridor to 'touch the river.' This route aims to provide off-road trail experience offering a safe and enjoyable non-motorized recreation for users of all levels of ability. The CRRT's proposed route stretches from the Luce Line State Trail in Watertown Township to the West Mississippi River Regional Trail in Dayton, connecting Carver, Hennepin, and Wright counties through the communities of Minnetrista, Independence, Franklin Township, Delano, Greenfield, Rockford, Rockford Township, Hanover, Rogers, and Otsego.

Rush Creek Regional Trail

The Rush Creek Regional Trail is a 9.6 mile long paved trail that spans between Elm Creek Park Reserve on Fernbrook Lane N. in Osseo and Coon Rapids Dam Regional Park on the Mississippi River in Brooklyn Park. This area with the trail is on the northern edge of the Minneapolis - St. Paul metro area and spans across forests and farmland.

In the future, proposed trails will connect Crow Hassan Park Reserve to Elm Creek Park with the Crow River Regional Trail. The City of Rogers is working with the Three Rivers Park District to expand the existing park long the Crow River that will bring people to and through the City of Rogers via this regional asset.

Recreational Programming

The City of Rogers Parks and Recreation Commission operate and manage over 325 programs each year with more than 3,500 individual participants. In addition, many more people utilize the Rogers Activity Center for activities.

Recreational programming in Rogers include:



<ul style="list-style-type: none"> • Entertainment in the Park • Movie at Dusk • Family Fun Nite • Learn to Skate • Playground program • Minnesota Twins Baseball Clinic • Arena Walking • Senior Dining • Senior programming 	<ul style="list-style-type: none"> • Men’s Softball • Skate with Santa • Middle School End of Year Party • Teen Loft Events • Glow N Skate • Farmers Market • Adopt-A-Park • Breakaway Hockey • Mite Jamboree • Community Garden
--	--

Partnerships

The Rogers Parks and Recreation Commission currently partners with community organizations, including:

- Rogers Lions Club
- Rogers Rotary Club
- Rogers ISD 728 Area School District
- All Rogers Athletic Associations

Joint Powers Agreement with Rogers Area School District

The Park Board has a Joint Powers Agreement with Rogers ISD Area School District 728 to provide recreation facilities to its residents throughout the community. Several school sites include neighborhood parks and community playfields with playgrounds and ballfields that are maintained by the City of Rogers Parks Department.

Athletic Group and Organizations

Many recreational programs available to Rogers’ residents are provided by private or non-profit groups and athletic associations. The City of Rogers Park Board works with these groups to provide physical facilities needed for recreational activities. Some facilities are offered at cost, others at no charge.

Implementation

The System Plan establishes an overall vision for the community that is ambitious, yet realistic, if incrementally implemented. Thoughtful and prudent implementation of the System Plan will be critical to being successful in meeting needs in a fiscally responsible and balanced manner. By taking an assertive role in managing implementation of the Plan in-sync with community development, the City can gain greater assurance that the quality of life values held by residents will be realized in the future. Success in this regard will require insightful leadership and a willingness to use a variety of approaches in managing development and leveraging financial



resources (public and private) to achieve desired public values. This section sets forth an overall implementation strategy and establishes baseline priorities to guide that process.

As defined above in Goals and Policies, a key principle of the plan is taking a balanced approach to implementation to ensure that multiple community values are being realized and that the wide-ranging interests of residents are well served as time goes on. A balanced approach also provides the City more latitude in taking advantage of opportunities as they arise. By focusing on raising the level of service through strategic and prioritized investments, the role that the system plays as a defining element in the City's infrastructure can be strengthened.

A sustainable system is the point to which the community is willing to support implementing the System Plan to receive desired public benefits. Benefits relate to cultural (personal and social), ecological, and economic values that individual residents and the larger community find important and are willing to support by making investments in the system.

To be sustainable, implementation of the plan must take into account the long-term commitments required to develop, operate, maintain, and ultimately replace each aspect of the System Plan as it moves through its lifecycle.

Rogers is committed to continuing public involvement through the implementation of the System Plan. The degree to which this will occur will vary depending on what aspect of the Plan is being implemented. For larger scale projects, such as the development or redevelopment of a neighborhood park, public involvement in the actual design process will be fairly extensive and involve representation from key stakeholders. In addition, forums for broader public input (e.g., open houses and presentations) would also be used as needed to communicate and exchange ideas with interested citizens. For smaller scale projects, notification to interested parties would be a more appropriate approach.

In addition to formalized processes for particular projects, Rogers will continue to use the Parks and Recreation Advisory Board to advise the City Council on development initiatives as they occur. The public is welcome to attend its regularly-scheduled meetings. Rogers uses numerous tools to provide a consistent level of communication with interested citizens.

Prioritization Criteria

The following table outlines general criteria for prioritizing Plan implementation. The criteria is broad enough to encompass the predominant factors in the decision process, yet limited enough to be manageable for decision makers to gain consensus and take action.

The following table establishes priorities between categories and the underlying rationale for one priority over another. Note that this is not absolute, which means that if an opportunity to implement a lower priority presents itself, the City should take advantage of it before the opportunity is lost.



<i>Priority</i>	<i>Category</i>	<i>Overall Priority Statement</i>
1	Trails	The implementation of trails is also intrinsically linked to community development, especially the trails that would traverse the greenway system. Given its routine rating as the highest value recreational activity by people across age groups, developing the trail system is justifiably a very high priority within the city. As with the greenways, most of the trails need to be established as part of development and road construction processes if they are to occur at all.
2	Athletic Facilities / Community Spaces	Athletic facilities and community spaces are listed near the top due to the 2017 Community Survey responses and also to ensure the City's response to immediate and near-term facility supply and demand is in balance. Moving forward with phased implementation of these facilities and spaces is a high priority.
3	Parks	Continued development of the park system remains important to serving traditional recreational needs, especially neighborhood and community parks. This falls slightly behind the other priorities larger due to the greater immediacy of addressing those opportunities as development occurs. However, funding of parks is an immediate concern.
4	Open Space and Greenways	Setting aside lands for open space and greenways is a priority because it is intrinsically linked to community development. Setting aside this land must occur as part of that process if it is to occur at all.
5	Natural Resources Stewardship	With the ever increasing value that society places on preservation of remaining natural areas, establishing a stewardship program will become an increasingly significant priority. It is rated lower at this point since much of this relates to lands that have yet to be set aside as future open space and greenways, which will occur as development expands across the City.

Summary Statement

Rogers is a fast growing community. The City Council is steadfast that our community will achieve this growth in a planned and measured way. We intend to take a proactive role in our growth and maintain the unique qualities that make Rogers a great place to live, work, and play.

Parks are essential to maintaining the quality of life for our community residents. Parks, open spaces, trails, and water features are all key components in making a healthy and aesthetically pleasing community. As we grow, it is essential that our park and recreation efforts meet the needs of current and future residents and guests. It is estimated that the City will have a population of 22,800 by 2040. Recommendations for additions to our existing park facilities and acquisition and development of future park and facilities are based on the anticipated growth pattern and the opportunity to protect sensitive areas and natural resources. The creation of future parks and the improvement of existing parks in the City of Rogers shall coincide with the Parks, Open Space, and Trail System Plan, which is the 10 year park plan for the community.



REQUEST FOR ACTION PARK BOARD

Meeting Date: November 8, 2018

Agenda Item: No. 6.3

Subject: Rogers Event Center Charette

Prepared By: Mike Bauer Recreation and Facilities Director

Recommended Park Board Action

Discuss dates for a Rogers Event Center planning charette.

Overview / Background

In order to move forward with the Rogers Event Center to be located at Lions Central Park staff would like input on a planning charette.

A charette is a meeting in which all stakeholders in a project attempt to resolve conflicts and map solutions. The outcomes we would like to have at the end of the process would be to have the final style of building selected, a budget and funding recommendations. Staff believe this would be a two day long effort.



REQUEST FOR ACTION PARK BOARD

Meeting Date: November 8, 2018

Agenda Item: No. 6.4

Subject: 2018 Work Plan

**Prepared
By:**

Overview / Background

This standing item is on the agenda to inform Park Board on current initiatives, and to allow the Park Board to provide direction when needed.

ATTACHMENTS:

Description

2018 Work Plan

Rogers Event Center Layout 9-21-18

DPG Concepts

Crow Hassan Park Reserve Amenities Request List

2018 Twelve Month Work Plan



Trails, Parks, and Recreation Referendum

- Define Projects
- Budget
- Public Outreach



Trails

- Development
 - o Rogers Elementary/Main Street (SRTS)
 - o Rush Creek (TRPD)
 - o Crow River (TRPD)
- Design
 - o Hassan Elementary To Marie Ave (SRTS)
- Construction
 - o Broadway Trail Link (FMP)
 - o Brockton Lane to Wellstead Drive (FMP)
 - o Territorial View Estates
 - o Shadow Wood Looping Trail



Lions/Triangle Park Pavilion Task Force

- Building Plan
- Park Master Plan including formal garden
- Site Prep
- Pavilion Construction???
- Remove Rink/Move Community Gardens



Master Park Plan Update

- 2017 Update
- Cowley Lake Park



Hennepin County Youth Sports Grant

- Reservoir Fields???
- SCP???



Tennis Center (Public Private Partnership)

- Parking Lot and Site Grading



South Community Park Planning

- Master Plan
- Rink Placement/Construction



Demolition of Driving Range



ISD 728 Partnership

- Pool
- Performance Gym
- Community Access



www.htg-architects.com
Minneapolis Phoenix Tampa Bismarck

9300 Hennepin Town Road
Minneapolis, MN 55347
Tel: 952.278.8880
Fax: 952.278.8822

PROJECT

TRIANGLE PARK PAVILION

NEW BUILDING

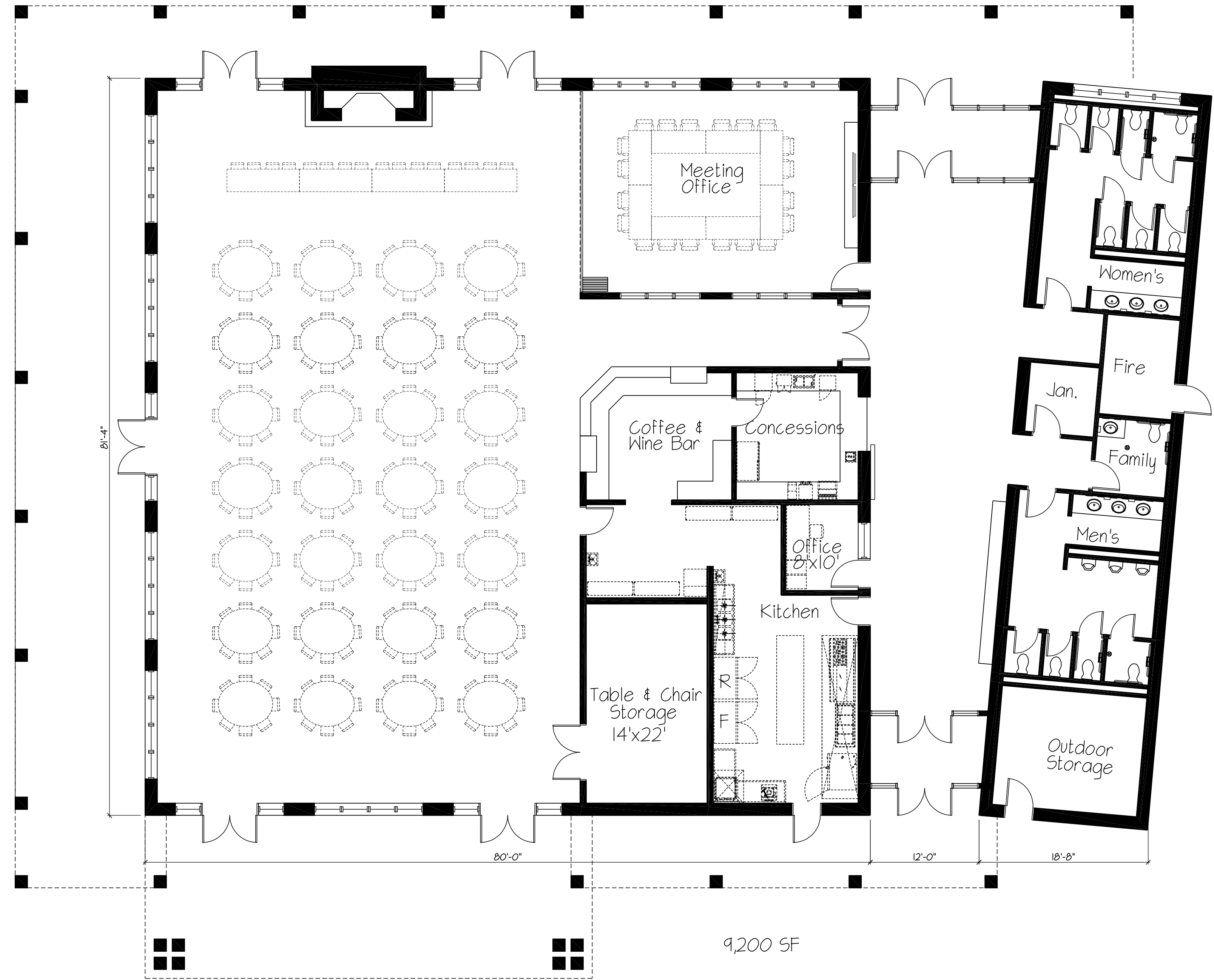
ROGERS, MINNESOTA

ISSUED SET		PRELIMINARY	08-28-18
REVISIONS			
DATE	NO.		

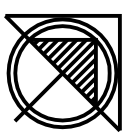
I HEREBY CERTIFY THAT THIS PLAN, SPECIFICATION
OR REPORT WAS PREPARED BY ME OR UNDER MY
DIRECT SUPERVISION, AND THAT I AM A DULY
LICENSED ARCHITECT UNDER THE LAWS OF THE
STATE OF MINNESOTA

THOMAS MOORSE
REG. NO. DATE

FLOOR PLAN



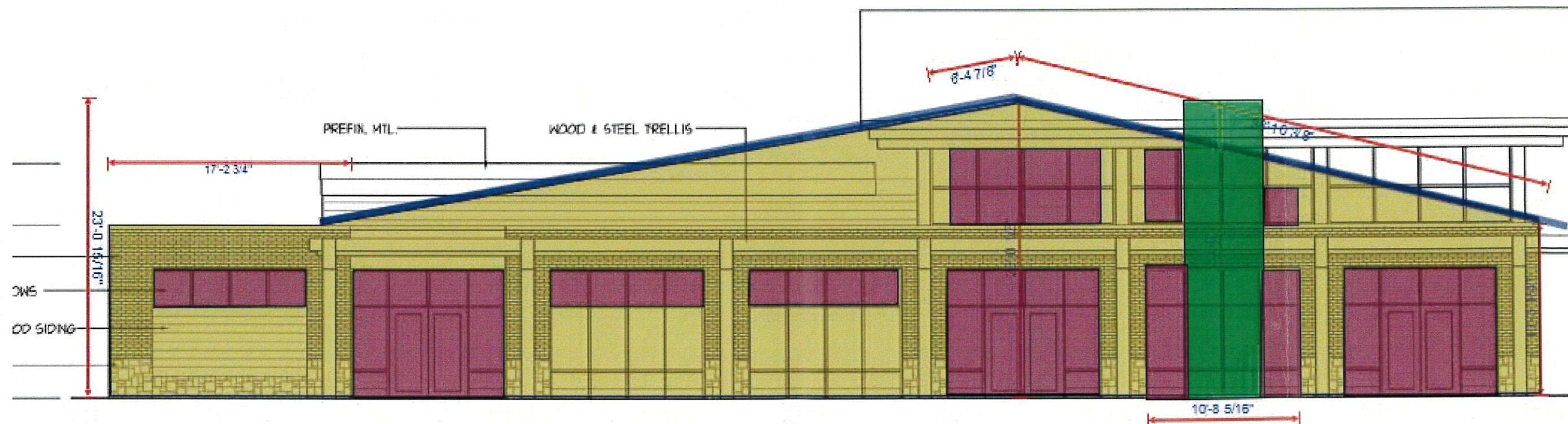
1 MAIN LEVEL FLOOR PLAN - 9,200 SF
A21 1/8" = 1'-0"



51-H41215.dwg Sep 21, 2018 - 11:16pm

DRAWN BY: AAT CHECKED BY: TRM

A2.1

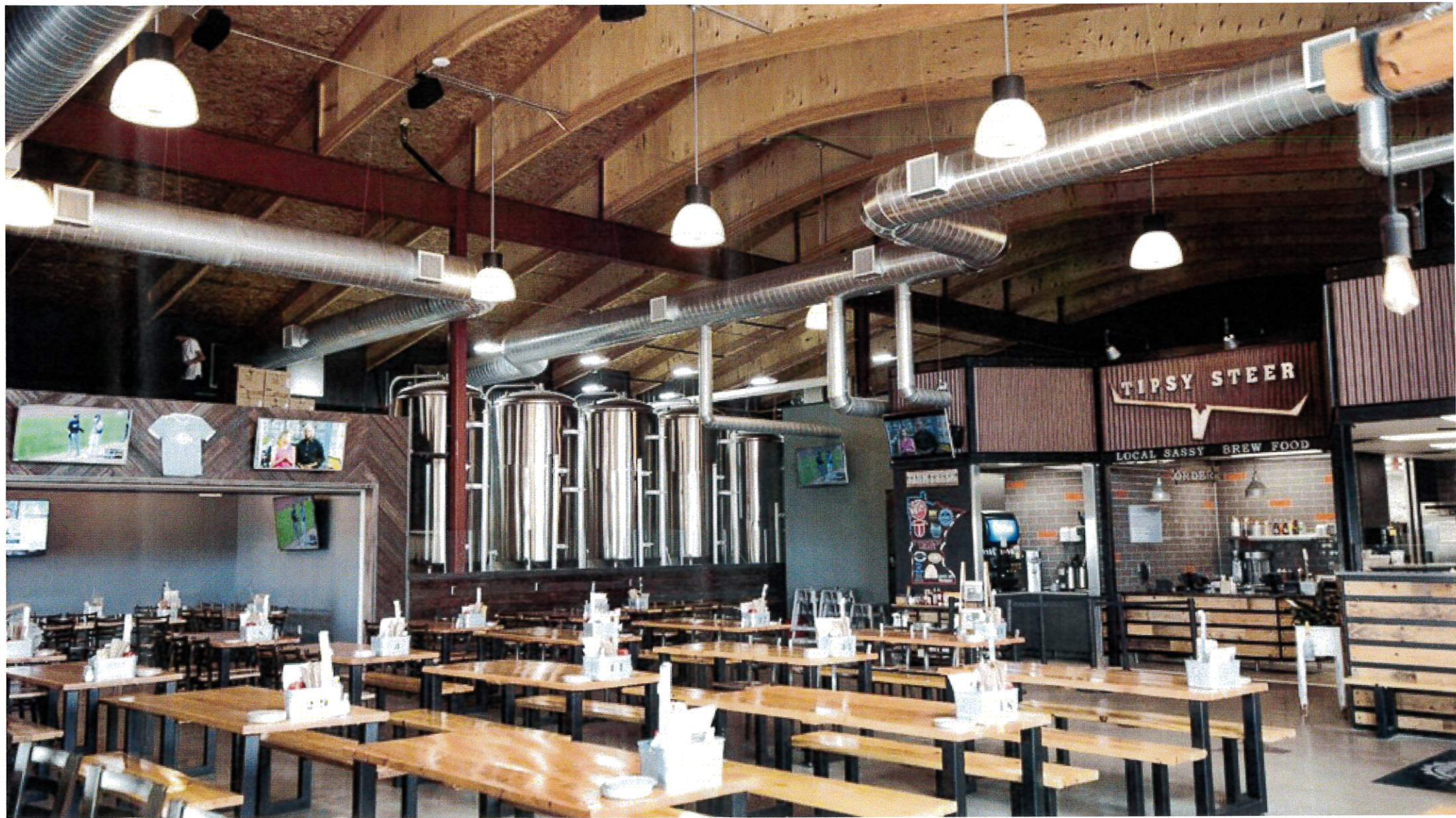


NORTH ELEVATION

1/8" = 1'-0"









Crow-Hassan Park Reserve Recommended Amenities

- Outdoor Aquatic Element
- River Access
 - Touchpoints to the river
 - Canoe/Kayak rental
 - Developed Recreational Area on the River for Picnics
 - Fishing piers
- Regional Playground-Similar to but smaller scale to Elm Creek Park
- Trail Features
 - CRRT Trail Head with Parking
 - Paved trails in the park that can get to many of the natural features
 - Mountain Biking Trail
 - Groomed Cross Country Trails
 - Snowmobile Trails
- Picnic Area with Shelters
- Campground
- Archery Range
- Historical Info-Graphics of the Park and Area
- Astronomy Programing, Nature Based Programing



**REQUEST FOR ACTION
PARK BOARD**

Meeting Date: November 8, 2018

Agenda Item: No. 8.1

Subject: Correspondence

Prepared By: Mike Bauer Recreation and Facilities Director

Financial Impact: Mike Bauer **Budgeted?**
Notes:

Source Fund:

ATTACHMENTS:

Description

Hassan Meadows Comments

Mike Bauer

From: CenturyLink Customer <slopeoakranch@embarqmail.com>
Sent: Monday, February 05, 2018 2:28 PM
To: Mike Bauer
Cc: Mike Bauer; planning-commission@rogersmn.gov
Subject: Hassan Meadows Park

Good afternoon Mike,

I saw the article in the local paper regarding park and trails planning and was dismayed to read that Hassan Meadows may be considered for elimination from the Rogers park system. I wanted to express my concern and my strong hopes that this does not occur.

Since the park has opened we've learned and grown to love the game of Disc Golf. During the summer we'll frequently play 2 or 3 times during the week and a couple more times on the weekends. I've met folks from the surrounding neighborhoods while playing, and even several from "in town" who venture out to the park to try their hand. Most summer days (weather permitting) there will be several groups who come to play golf, and there are often kids on the basketball court or using the ball field. Once we even talk to a large group of family and friends that were starting their "stag" party at the park with a round of healthy walking.

Granted I may be biased as this park is just a mile down the road from me. If this park were to be lost I'd need to drive out of Rogers 10 miles or more to find a course, and none as forgiving or as family friendly as Hassan Meadows. I've even pushed my granddaughter around the course in a stroller (but thank goodness she walks now). With the park in our neighborhood we find our house is a gathering spot for my family and friends to meet before playing, and when done we will often head into Rogers to eat.

Again, I just wanted to express my opinion... my desire to have this park remain. Eliminating it, or any parkland seems to be a step in the wrong direction. Anything that can be done to remove this park from that consideration is greatly appreciated. If it does end up on a chopping block I would further hope that they gather much more input from the folks that live near this park as it was in the neighborhood before many of the homes within 5 miles were built, hence may have even been an "asset" during their home purchase decision.

Thanks for listening!

Regards,

Keith Ouellette
12023 Tucker Road



**REQUEST FOR ACTION
PARK BOARD**

Meeting Date: November 8, 2018

Agenda Item: No. 8.2

Subject: Staff Update

Prepared By: Mike Bauer Recreation and Facilities Director

Overview / Background

Monthly update on Parks and Recreation Programming.

ATTACHMENTS:

Description

October Staff Update



Staff Update

Parks and Recreation

100th anniversary World War I Remembrance

Join us at the Senior Center on Sunday, November 11 at 1 pm, to recognize Veterans Day and the centennial of the World War I armistice. The armistice ended fighting on land, sea, and air between U.S. allies and their last opponent, Germany.



- Sunday, November 11, 1-3 pm.

Featured program

- Prominent speaker on the war's history 1 pm (Senior Center)
- Reflective walk to Veterans Memorial 2 pm (Weather Permitting)
- Light Refreshments (Senior Center)

Senior Center: 12913 Main Street, Rogers, MN 55374

Veterans Memorial: 12720 Main St, Rogers, MN 55374

Halloween Carnival and Open Skate

Over 250 people showed up for the Halloween Carnival and Open Skate. This was a great showing for this first time event. We partnered with Community Education and held a free kid's Halloween Carnival filled with games and



prizes. We also had Brian Richards come and do his "Spooky" but not Scary Magic Show. This was a 45 minute performance that involved everyone in attendance and there was plenty of laughter and smiles all around. The carnival games and entertainment was followed up with an open skate where anyone in costume got to skate free. We had over 200 in attendance for this event and over 70 stayed for

skating. Many parents thanked us for putting on this event and were already asking if we will be doing it again next year.

MRPA Annual Conference

Recreation Coordinator Faust, Recreation and Facilities Director Bauer attended the Annual Minnesota Recreation and Park Association Conference and Exhibit Hall on October 10-12. Staff is grateful to be able to attend these events to learn about trends in parks and recreation, facility management, communications, budgeting, programming, and strategic planning.

Adult Fall Softball

Fall ball officially ended October 22 due to many weather related delays. Our champions this year with a 12 - 0 record was Clive's Roadhouse-Red. Congratulations!



Senior Recreation

Senior Dining

The average number of meals served in October was 13 per day. The daily attendance ranged from 8 - 21 and two Thursday meals were cancelled due to low reservations.

iPad/Tablet Workshop 2

On Wednesday, October 10, a follow up tablet class was held at the Senior Center to compliment the 1st class offered in September. This 2-hour class was held under the instruction of Ray the Computer Guy for 5 students.

Crafters Meetup

On Wednesday, October 10 & 24, local crafters gathered at the Senior Center to work on their projects and socialize. This is the first month they routinely met and will continue to gather every other Wednesday morning.

Health Insurance Counseling

On Thursday, October 11, and Tuesday, October 23, health insurance assistance sessions were offered at the Senior Center. A volunteer from Metropolitan Area Agency on Aging (MAAA) assisted with three 1-hour appointments each day for individuals and couples. This service will be offered monthly until no longer needed.

Prairie's Edge Casino Overnight Trip

On Sunday, October 14, a group of 25 Elk River seniors and 27 Rogers seniors headed to Prairie's Edge Casino in Granite Falls for an overnight trip provided by Across Country Tours. The trip included bus transportation, hotel stay, ACT trip escort, \$50 on everyone's players cards, and tickets to "A Tribute to the Blues Brothers" show.

Drawing & Colored Pencils Art Classes

On Tuesday, October 16 & November 6, Donna taught 90 minute art classes at the Senior Center for only \$7.50 a class.

Great Decisions Discussion Group

On Wednesday, October 17, nine people gathered at the Senior Center to discuss *South Africa's Fragile Democracy*. They watched a half hour documentary on the topic before discussing with a local expert, Henry.



Live Music at Lunch

On Wednesday, October 17, a local senior musician named Ken came to the Community Room to play guitar & sing during senior dining.

Senior Cinema Series

On Monday, October 22, the movie "*The Terminal*" was played at the Senior Center for one attendee.

Lunch & Learn: City Council Update

On Wednesday, October 24, Mayor Rick Ihli and City Council Member Shannon Klick came to senior dining to share several updates on City business, council priorities, transportation projects, potential sales tax referendum, and other topics that are of interest to the 21 seniors & community members who attended.



Driver Improvement Class

On Thursday, October 25, a 4-hour refresher class was scheduled to be held at the Senior Center but only two people signed up, so it was cancelled.

Moore Magic Show at Plymouth Playhouse

On Tuesday, October 30, a trip was planned to the Plymouth Playhouse to see a grand illusion show after enjoying a Green Mill lunch buffet, but only 11 people signed up so it was cancelled.

Halloween Bingo & Pizza Party

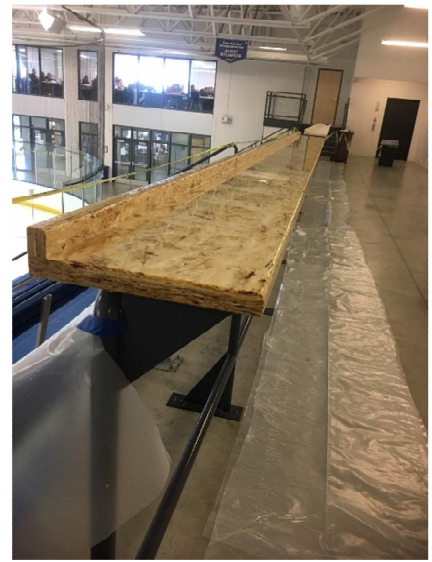
On Wednesday, October 31, Domino's Pizza was served for \$3/person to 23 people prior to an hour of free bingo, which had 33 participants. Halloween decorations, candy and a full dessert & refreshment buffet was provided. Costumes were encouraged and a vote was taken to decide the best costume. Annette won the door prize for best costume with her "smarty pants" outfit, which consisted of fun colors and Smarties candies pinned to her pants.



Activity Center

Drink Rail Project

This week staff put the finishing touches on a drink rail at the Activity Center. Staff received quotes for this amenity from \$4,000 and up. With the help of Our Mechanic Bob Rotz welding the brackets in place, and Building Maintenance Pete Hayes. Assistant Manager Travis Goodrich completed the whole project for less than \$1,000. The hope is to make a comfortable environment for parents to work in during practices and



stay at the facility and spend more money in the concessions stand.

Learn To Skate

Our Fall 1 session ended Oct 13 and our Fall 2 session started the weekend after on Oct 20 with 84 registrants from 10 communities including Rogers, Otsego, Elk River, Zimmerman, St. Michael, Albertville, Monticello, Corcoran, Hanover, and Big Lake. This is a decrease of 17 registrations compared to 2017.